



www.kings-group.net

248 Hoe Street
Walthamstow E17 3AX
Tel: 020 8521 1122

Luther King Close, London, E17 8RX
£2,150 Per Month


Kings Group are delighted to present this flat on Luther King Close, London, this charming ground floor flat offers a delightful living experience.


The flat features a well-proportioned reception room, perfect for relaxation or entertaining guests. With two spacious bedrooms, there is ample room for both rest and personal space, catering to a variety of lifestyles. The quiet location enhances the appeal, providing a peaceful retreat from the hustle and bustle of city life.

Convenience is at your doorstep, as the property is within walking distance to the tube, ensuring easy access to the wider London area. This flat is not just a home; it is a sanctuary that combines comfort, accessibility, and tranquillity. Whether you are a first-time buyer, a young professional, or looking to downsize, this property is sure to meet your needs and exceed your expectations.

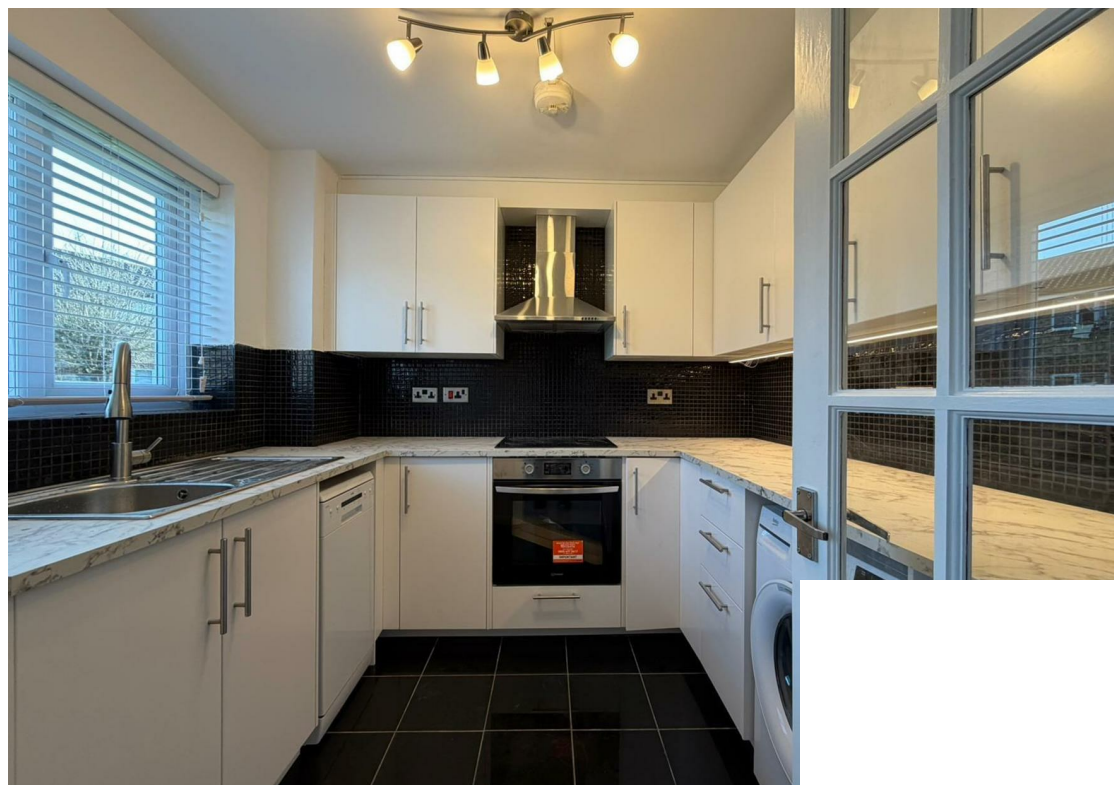
Do not miss the opportunity to make this lovely flat your new home in one of London's desirable locations.



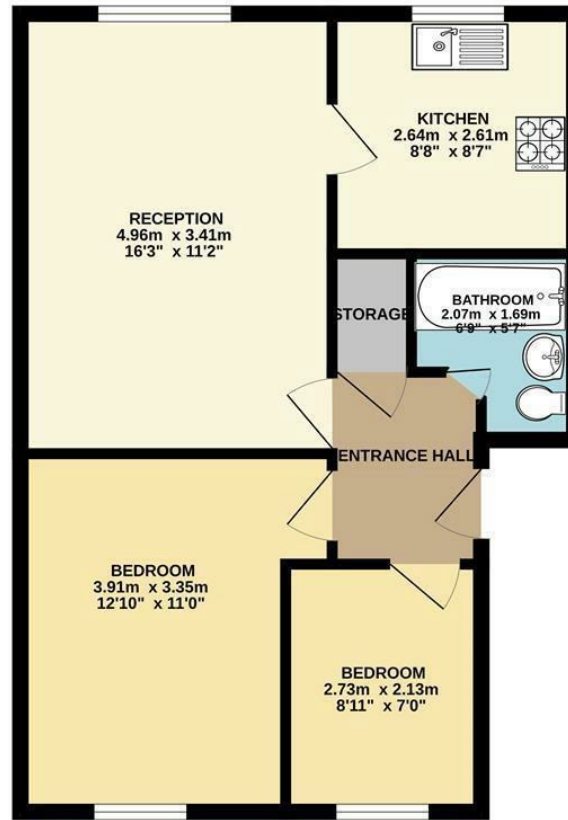
Energy Efficiency Rating		
	Current	Potential
<i>Vary energy efficient - lower running costs</i>		
(92 plus) A		
(81-91) B		
(69-80) C		
(55-68) D		
(39-54) E		
(21-38) F		
(1-20) G		
<i>Not energy efficient - higher running costs</i>		
England & Wales	EU Directive 2002/91/EC	

Environmental Impact (CO ₂) Rating		
	Current	Potential
<i>Vary environmentally friendly - lower CO2 emissions</i>		
(92 plus) A		
(81-91) B		
(69-80) C		
(55-68) D		
(39-54) E		
(21-38) F		
(1-20) G		
<i>Not environmentally friendly - higher CO2 emissions</i>		
England & Wales	EU Directive 2002/91/EC	

71



GROUND FLOOR
49.0 sq.m. (527 sq.ft.) approx.



TOTAL FLOOR AREA : 49.0 sq.m. (527 sq.ft.) approx.

Whilst every attempt has been made to ensure the accuracy of the floorplan contained here, measurements of doors, windows, rooms and any other items are approximate and no responsibility is taken for any error, omission or mis-statement. This plan is for illustrative purposes only and should be used as such by any prospective purchaser. The services, systems and appliances shown have not been tested and no guarantee as to their operability or efficiency can be given.
Made with Metropix 62024

